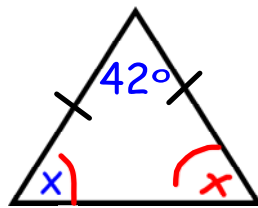


Using Isosceles Triangle Theorem and its converse.

Examples

1. Find x .



Solution:

The two base angles are congruent since the sides are marked congruent.

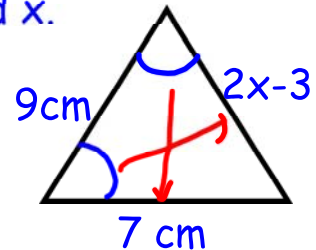
$$x + x + 42 = 180$$

$$2x + 42 = 180$$

$$2x = 138$$

$$x = 69$$

2. Find x .



Solution:

The two sides across from the base angles are congruent since the base angles are congruent.

$$2x - 3 = 9$$

$$2x = 12$$

$$x = 6$$